

iHEADBONES

Welcome to iHeadBones, the earbud alternative that lets you listen to your music, an audio book, your favorite radio station or podcasts — anything you choose — and still hear what is going on around you. With iHeadBones you are able to hear friends, coworkers, traffic, and the world around you.

iHeadBones open ear headphones use bone conduction technology that offers rich depth of sound transmitted through your head bones directly to your inner ear, leaving your ears unobstructed and open.

Your iHeadBones kit includes our patent pending amplifier, a light-weight headset, acoustic devices, charger, audio cables, and Velcro® (use optional).

Setting Up Your iHeadBones

Your iHeadBones acoustic devices are powered by an amplifier, it is important to have this amplifier fully charged before you use your iHeadBones.

- Charge the amplifier by connecting the USB cable supplied to any USB port on your computer or to an AC adaptor accessory. The LED light on the amplifier will be green while it is charging, unlit when charging is complete.
- When not using your iHeadBones, keep the switch on the amplifier in the OFF position to conserve battery life. The amplifier will typically provide 10+ hours of use on a single charge.
- Plug one end of the audio cable into the amplifier port marked INPUT and the other end into your audio device. SEE ILLUSTRATION (A).
- Connect your iHeadBones into the amplifier port marked HEADSET.
- Slide the amplifier switch to ON, turn on your audio device, and enjoy! iHeadBones will use its conduction technology, delivering sound to whomever – or whatever solid surface – it comes in contact with.
- For best results, press the iHeadBones to the bones of your head, either in front of or behind your ears near your frontal lobes – which are approximately at the level of, or just above your eyes. Try different positions, some positions may offer better comfort or conductivity and therefore better sound.

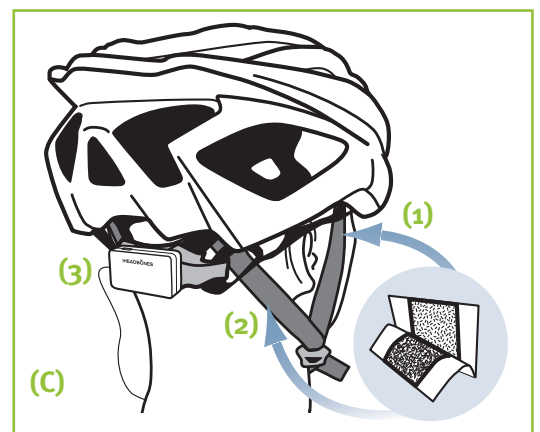
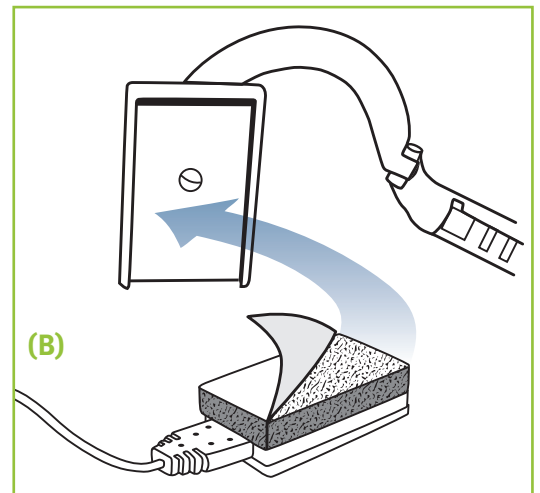
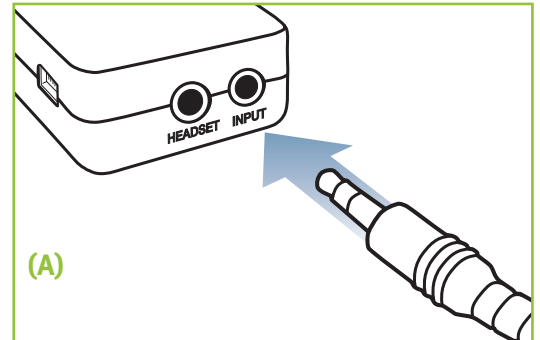
iHeadBones Components and TWO Assembly Options

The kit includes a headset for wearing your iHeadBones. Peel the cover off the soft foam that is attached to the acoustic devices and attach the devices directly to the flat pieces on the headset, SEE ILLUSTRATION (B).

Your kit also includes three Velcro® strips for wearing your iHeadBones in helmets, hats, and other applications where you prefer not to use the headset. For use with bike helmets, we suggest adhering the acoustic devices in the helmet near your frontal lobe or behind your ears (1), or attach them to the helmet straps that run behind your ears (2). Use Velcro® to attach the amplifier to the back strap of the helmet (3). Experiment with different places on your head to maximize your sound quality, SEE ILLUSTRATIONS (C: 1, 2, 3).

Need More Information?

Please visit our web site – www.iheadbones.com – for ideas on how to listen to your music safely. You can also contact us at customersupport@iheadbones.com or call 215-962-6509 Monday through Friday 8:00 A.M. to 6:00 P.M. EST.



Thanks for purchasing iHEADBONES

iheadbones.com

HB-201B